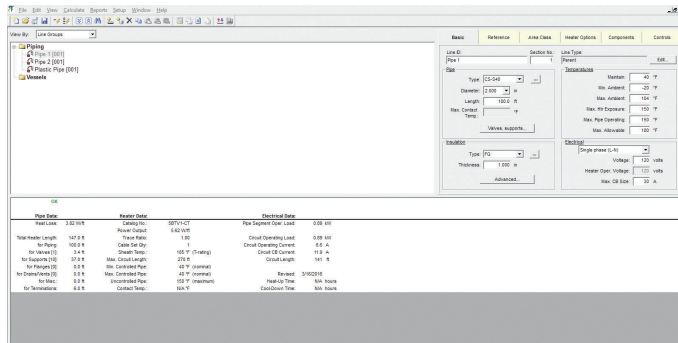


## AUTOMATED HEAT-TRACING DESIGN SOFTWARE FOR PIPES AND VESSELS



Download TraceCalc Pro from [nVent.com/RAYCHEM](http://nVent.com/RAYCHEM)

### PRODUCT OVERVIEW

With nVent RAYCHEM TraceCalc Pro software, nVent provides you with an unprecedented design tool that lets you select heat-tracing products from a world-class brand such as RAYCHEM giving you an optimal heat-tracing solution.

TraceCalc Pro design software brings you the latest advances in automated heat-tracing design capabilities. It sets new standards in the features you need for simple or sophisticated designs. With its intuitive user-friendly interface, you can create a heat-tracing design quickly and accurately.

TraceCalc Pro includes a wide variety of heating cable technologies and provides:

- Design calculations, such as pipe and vessel heat loss, number of circuits, electrical loads and maximum temperatures
- Automated heating cable and connection kit selection
- Recommendations for control and monitoring systems
- Easy-to-use standard reports
- Pictorial representations of heat-tracing connection kits

The software is designed for all levels of users. The novice user can quickly obtain a design through default settings and auto-select features. Advanced users can customize default settings for full design capability, while the expert user will enjoy the ability to set project defaults, and export saved projects to remote users.

TraceCalc Pro provides a common platform for users in different countries to share data in the language of their preference: English, French and German with worldwide codes and design practices supported.

## SPECIFICATIONS

---

### System requirements

To install and run the software, you will need:

- Microsoft Windows 7 or 8
- Web browser such as Windows Internet Explorer, Google Chrome or Mozilla Firefox
- Adobe Acrobat Reader 11 or later
- Internet access
- At least 50 MB of free hard disk space
- Recommended: 500 MHZ, 2 GB RAM
- A mouse or other pointing device
- SVGA display with 800 x 600 resolution minimum

### Registration

TraceCalc Pro will allow for complete pipe tracing designs for a period of 30-days from installation. After this period, or for vessel design capability, you must register the software. For more information on how to register, visit our web site at [nVent.com](http://nVent.com).

### Features

- Intuitive, easy-to-navigate, user-friendly interface
- Allows for design of both pipe and vessel tracing systems
- Supports designs for pipes and/or vessels using self-regulating, power-limiting, and series cables
- Also supports 3-phase series cable designs
- Graphical representation of heat-tracing connection kits
- Create complex piping circuits with drag-and-drop piping segments
- Accommodates multiple pipe sections each with different design parameters on a single circuit
- Up to three different valve and support types on a single line
- Nonstandard, oversized insulation design capability
- Supports worldwide codes and design practices
- Unlimited number of lines per project
- Enhanced reporting capability
- Designs comply with area classification requirements
- User-specified T-rating and autoignition temperatures
- Supports all control and monitoring capabilities: uncontrolled, ambient-sensing, PASC (proportional ambient sensing control), and line sensing
- Agency-approved maximum sheath temperature calculation, including control-limited designs
- User-selectable stabilized design capability
- Automatically and continuously displays calculated design results
- Users can register online to be notified of new releases and special updates
- Export functions simplify the exchange of data to other applications
- English, French and German user interface and help text

### North America

Tel +1.800.545.6258  
Fax +1.800.527.5703  
[thermal.info@nvent.com](mailto:thermal.info@nvent.com)

### Europe, Middle East, Africa

Tel +32.16.213.511  
Fax +32.16.213.603  
[thermal.info@nvent.com](mailto:thermal.info@nvent.com)

### Asia Pacific

Tel +86.21.2412.1688  
Fax +86.21.5426.3167  
[cn.thermal.info@nvent.com](mailto:cn.thermal.info@nvent.com)

### Latin America

Tel +1.713.868.4800  
Fax +1.713.868.2333  
[thermal.info@nvent.com](mailto:thermal.info@nvent.com)



[nVent.com](http://nVent.com)

Our powerful portfolio of brands:

**CADDY ERICO HOFFMAN RAYCHEM SCHROFF TRACER**